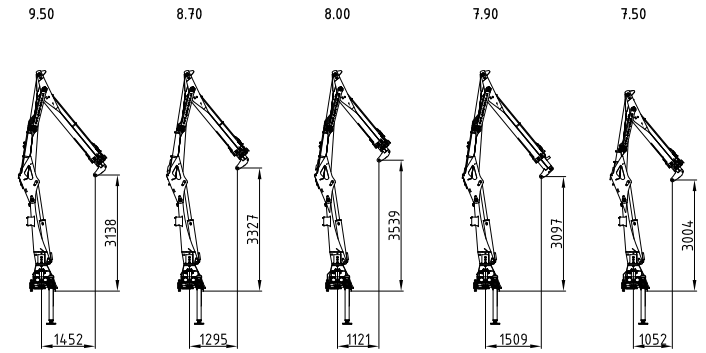
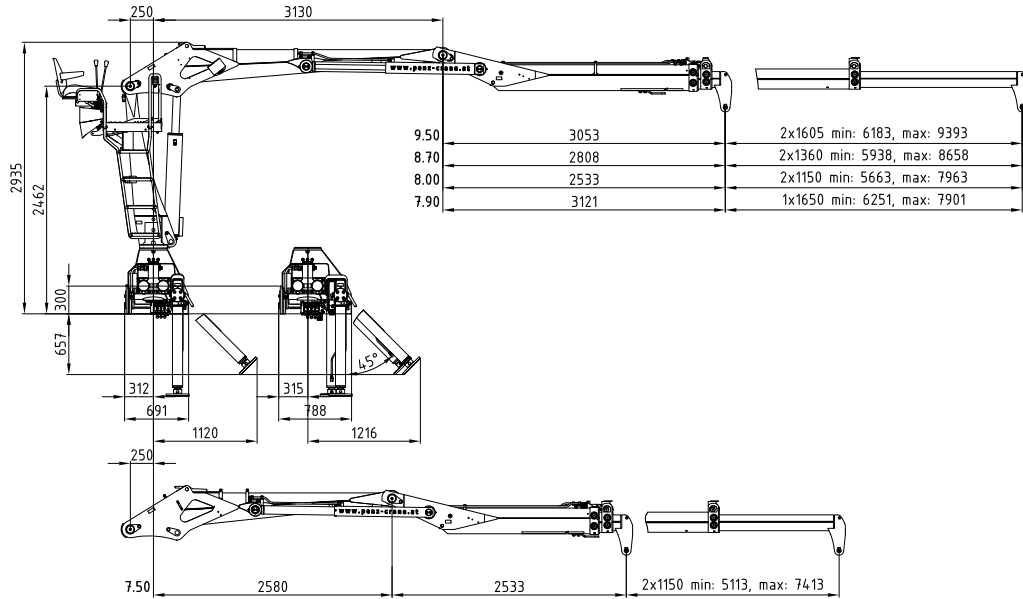
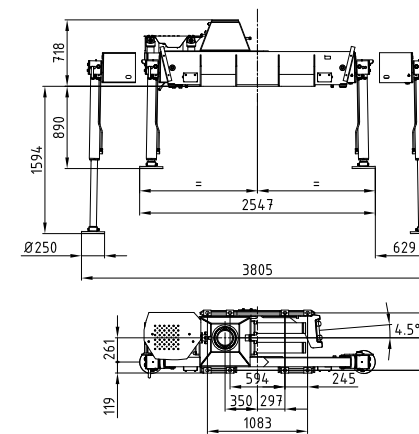


15Z 16Zp+

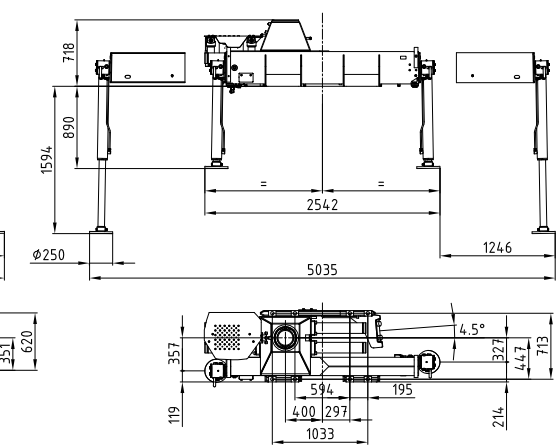
| | | | | | | | | | | |
|---------------|-------------|-------------|-----------|------------------|------|--------|---------------|------------------------------------|-----------------------------------|------------------------------------|
| | | | | | | | | | | |
| 141 - 161 kNm | 7,5 - 9,4 m | 3,0 - 3,5 m | 3,8 - 5 m | 2.260 - 2.440 kg | 415° | 25 kNm | 255 - 285 bar | 1x Minimum 100 l/min ~ 50 kW | 2x Minimum 65 l/min ~ 61 kW | LS Minimum 170 l/min ~ 85 kW |



Kransockel schmal
Crane base small

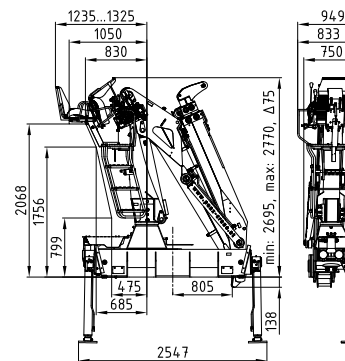


Kransockel breit
Crane base wide

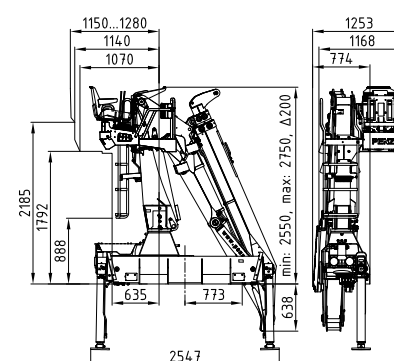


| | | | | | | | |
|-----------|------|------|------|------|------|------|------|
| | 4m | 5m | 6m | 7m | 8m | 9m | |
| 15Z9.50 | 3690 | 2830 | 2420 | 2050 | 1760 | 1540 | (kg) |
| 16Zp+9.50 | 4075 | 3135 | 2675 | 2270 | 1950 | 1705 | (kg) |
| 15Z8.70 | 3725 | 2865 | 2450 | 2080 | 1785 | | (kg) |
| 16Zp+8.70 | 4125 | 3175 | 2710 | 2300 | 1975 | | (kg) |
| 15Z8.00 | 3750 | 2885 | 2470 | 2095 | | | (kg) |
| 16Zp+8.00 | 4150 | 3190 | 2725 | 2315 | | | (kg) |
| 15Z7.90 | 3780 | 2905 | 2505 | 2115 | | | (kg) |
| 16Zp+7.90 | 4175 | 3210 | 2740 | 2330 | | | (kg) |
| 15Z7.50 | 3805 | 2925 | 2520 | 2125 | | | (kg) |
| 16Zp+7.50 | 4195 | 3230 | 2755 | 2345 | | | (kg) |

Rücksitz 01 mit Armsystem 7.50
Back seat 01 with load booms 7.50



Seitensitz 04 rechts & links mit Armsystem 9.50
Side seat 04 right & left with load booms 9.50



Rücksitz 04 mit Armsystem 9.50
Back seat 04 with load booms 9.50

